

Hardware/Appliances
 Sleeve Bearing MMC#6362K218
 5/16"-18 Leveling Foot MMC #1942K73
 Custom Foot Plate - SendCutSend
 Stainless #10 Screws MMC #90294A247
 Stainless 8-32in x5/8in Screws

Materials & Finish
 Powder Coated Aluminum
 Finish TBD
 Ipe Bench Top + Slats

Date
 6/13/2023

Drawn
 MH

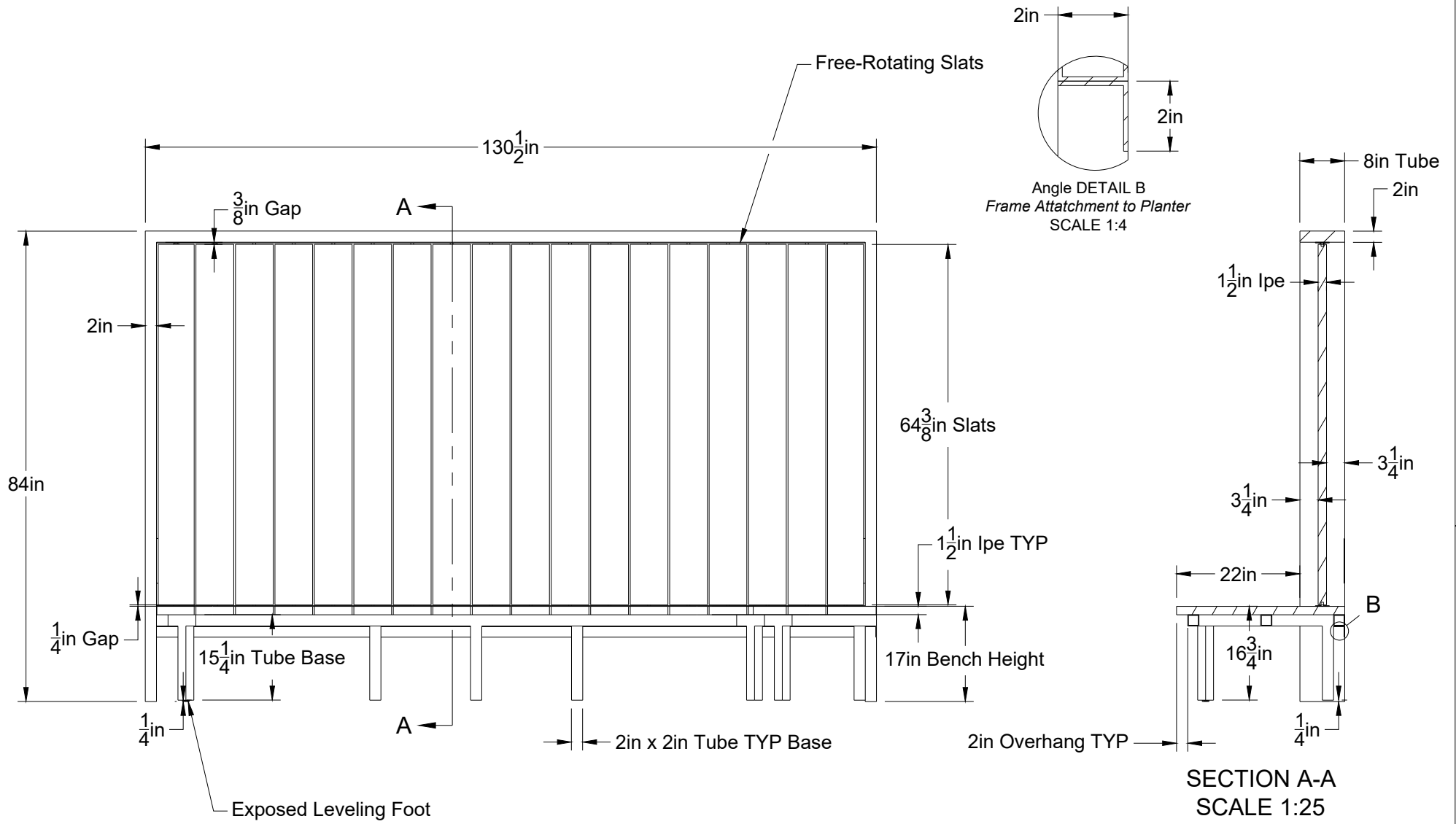
Page/of
 1/10

Client
 Reisner-Forgan

Approved
 ZR

Project
 Penthouse Bench and Screen

zakrose
 2100 N Major Ave, Chicago, IL, 60639
 zakrose.com | zak@zakrose.com



Hardware/Appliances	
---------------------	--

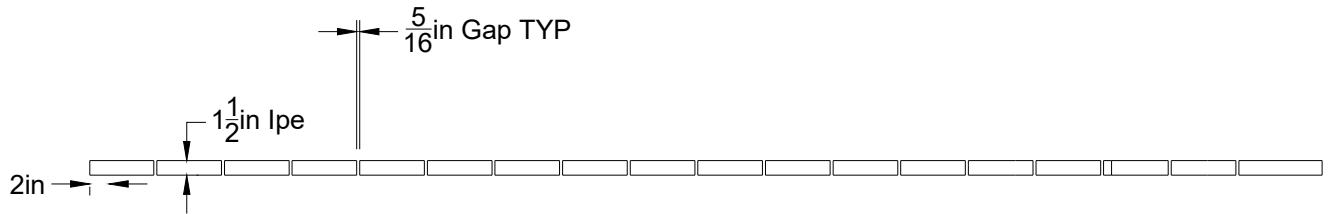
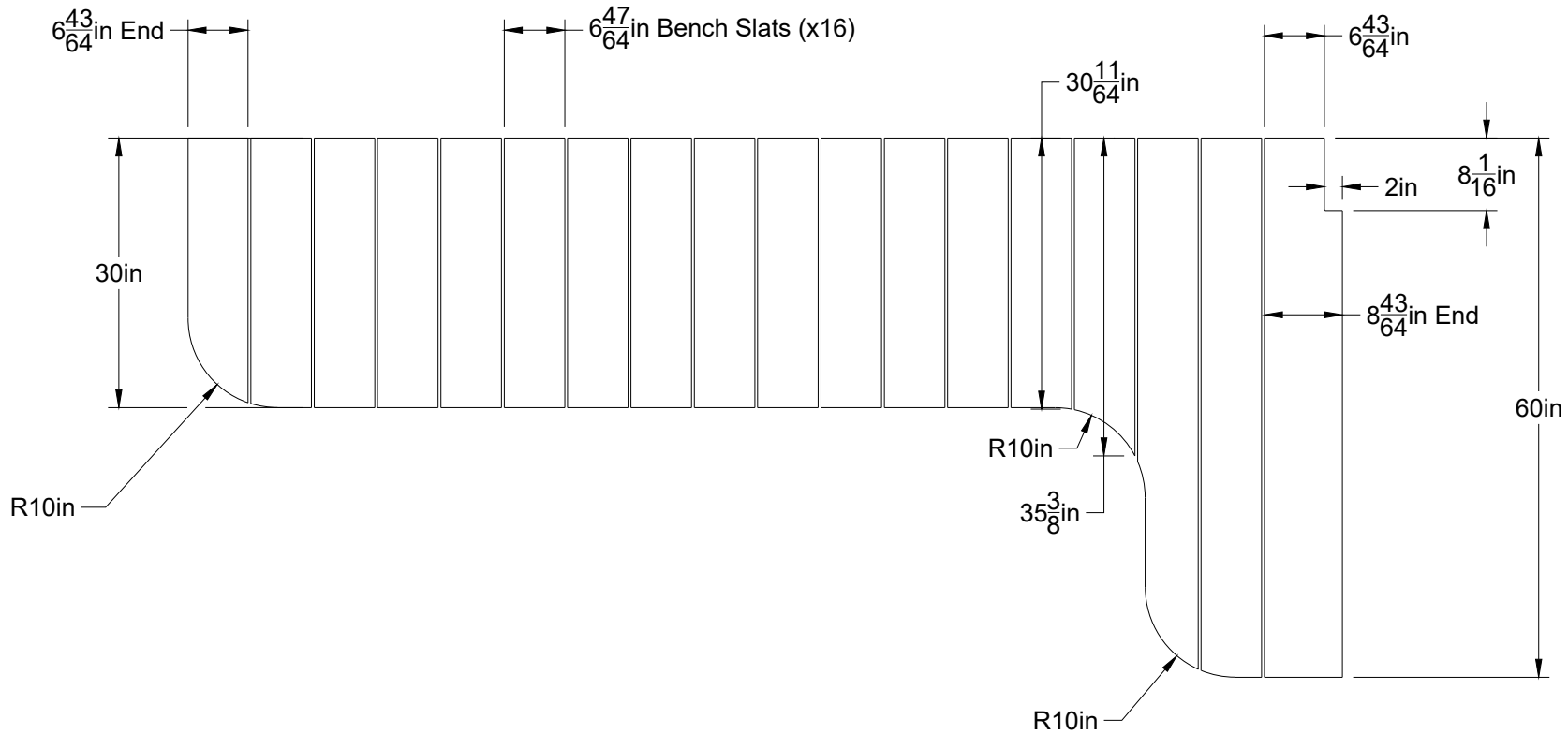
Materials & Finish	
--------------------	--

Date 6/13/2023	
Drawn MH	Approved ZR
Page/of 2/10	Scale 1:25

Client Reisner-Forgan
Project Penthouse Bench and Screen

zakrose

2100 N Major Ave, Chicago, IL, 60639
zakrose.com | zak@zakrose.com



Bench Slats

Hardware/Appliances	Materials & Finish
	Ipe

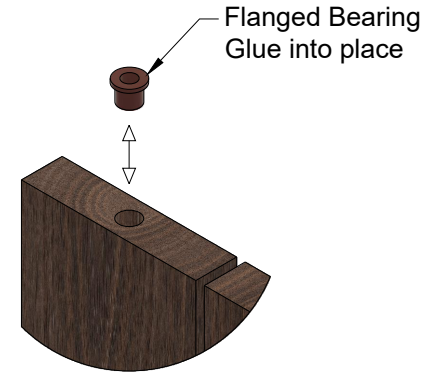
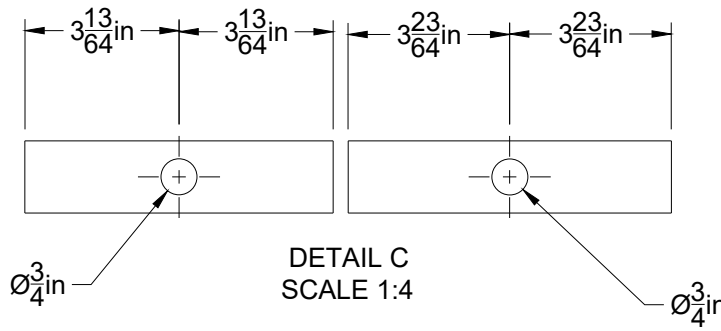
Date	6/13/2023
Drawn	MH
Page/of	3/10

Approved	ZR
Scale	

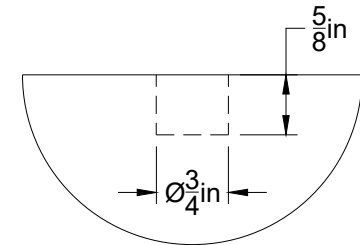
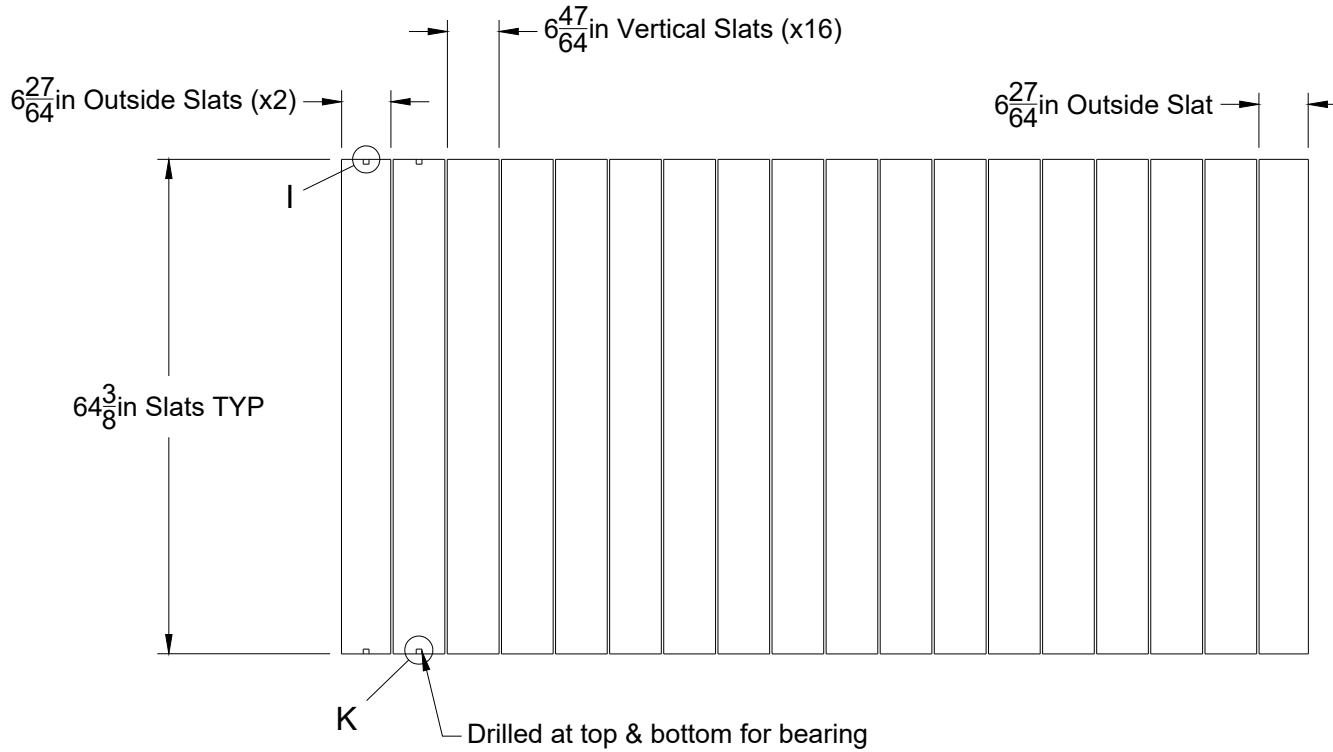
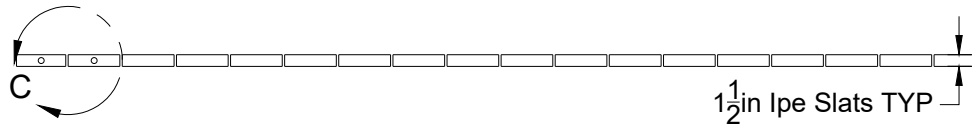
Client	Reisner-Forgan
Project	Penthouse Bench and Screen

zakrose

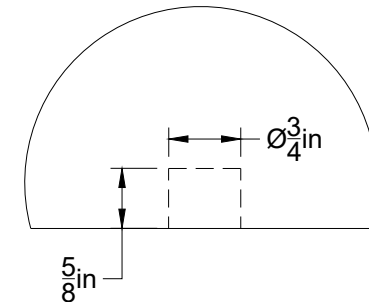
2100 N Major Ave, Chicago, IL, 60639
zakrose.com | zak@zakrose.com



Slat Assembly
Top, Bottom TYP
SCALE 1:5



Top Hole
DETAIL I
SCALE 1:2

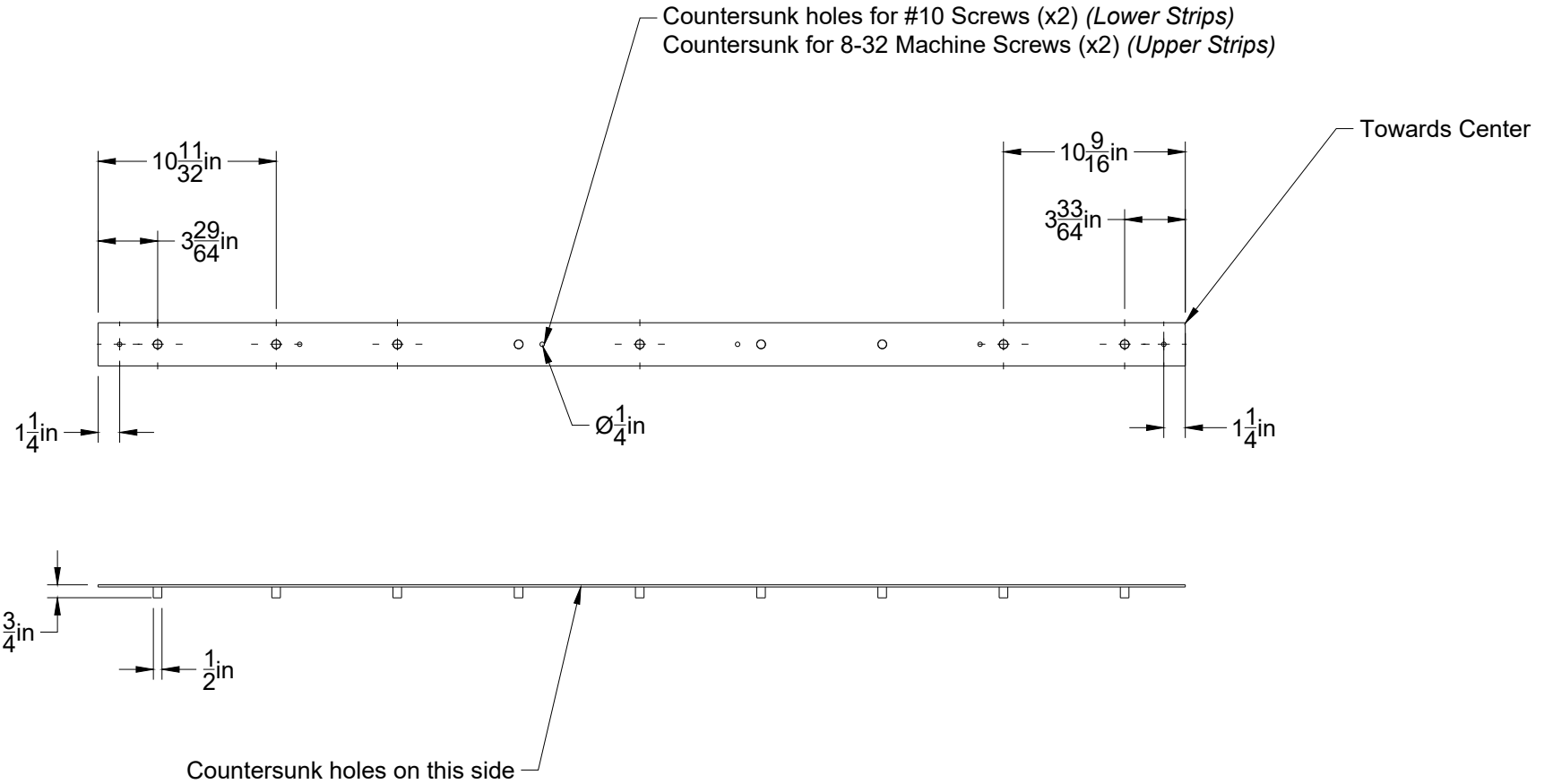


Bottom Hole
DETAIL K
SCALE 1:2


Vertical Slats

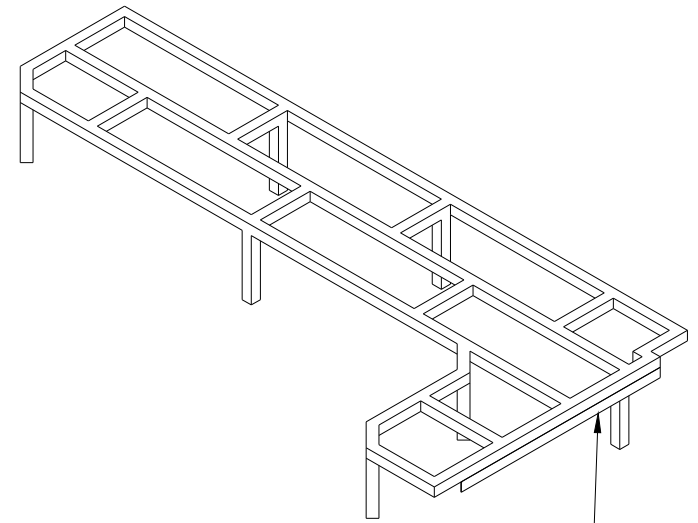
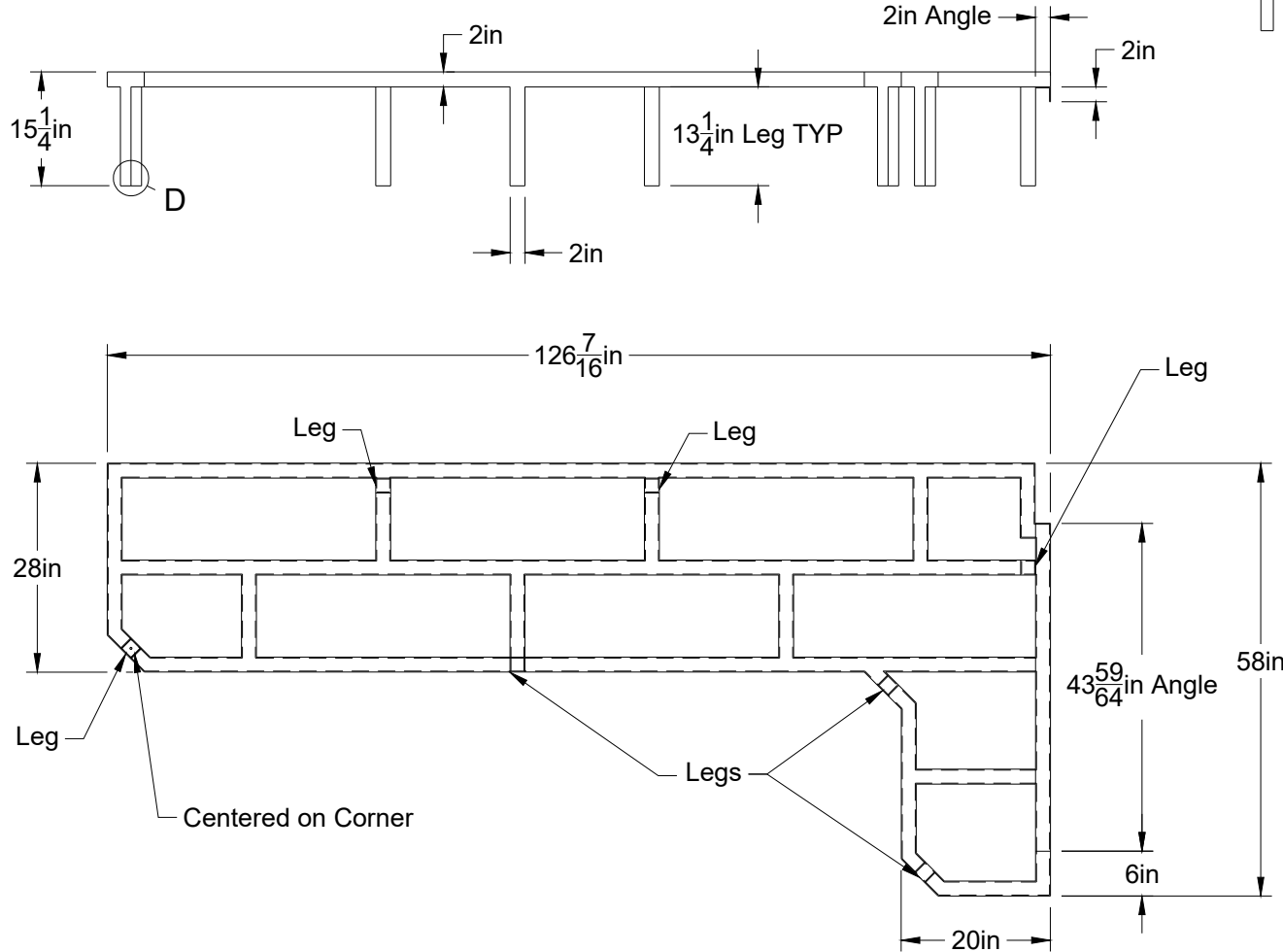
Hardware/Appliances	Materials & Finish Ipe	Date 6/13/2023	Client Reisner-Forgan			
		Drawn MH			Approved ZR	Project Penthouse Bench and Screen
		Page/of 4/10			Scale 1:25	

QTY: (x4)

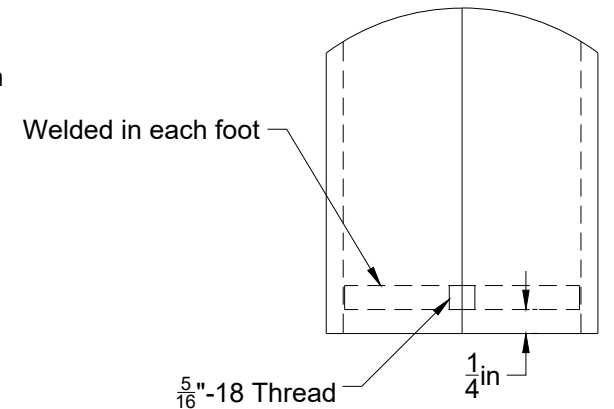


Stainless Strip TYP

Hardware/Appliances	Materials & Finish Stainless Strip Stainless Rod	Date 6/13/2023		Client Reisner-Forgan Project Penthouse Bench and Screen	 2100 N Major Ave, Chicago, IL, 60639 zakrose.com zak@zakrose.com
		Drawn MH	Approved ZR		
		Page/of 5/10	Scale 1:10		



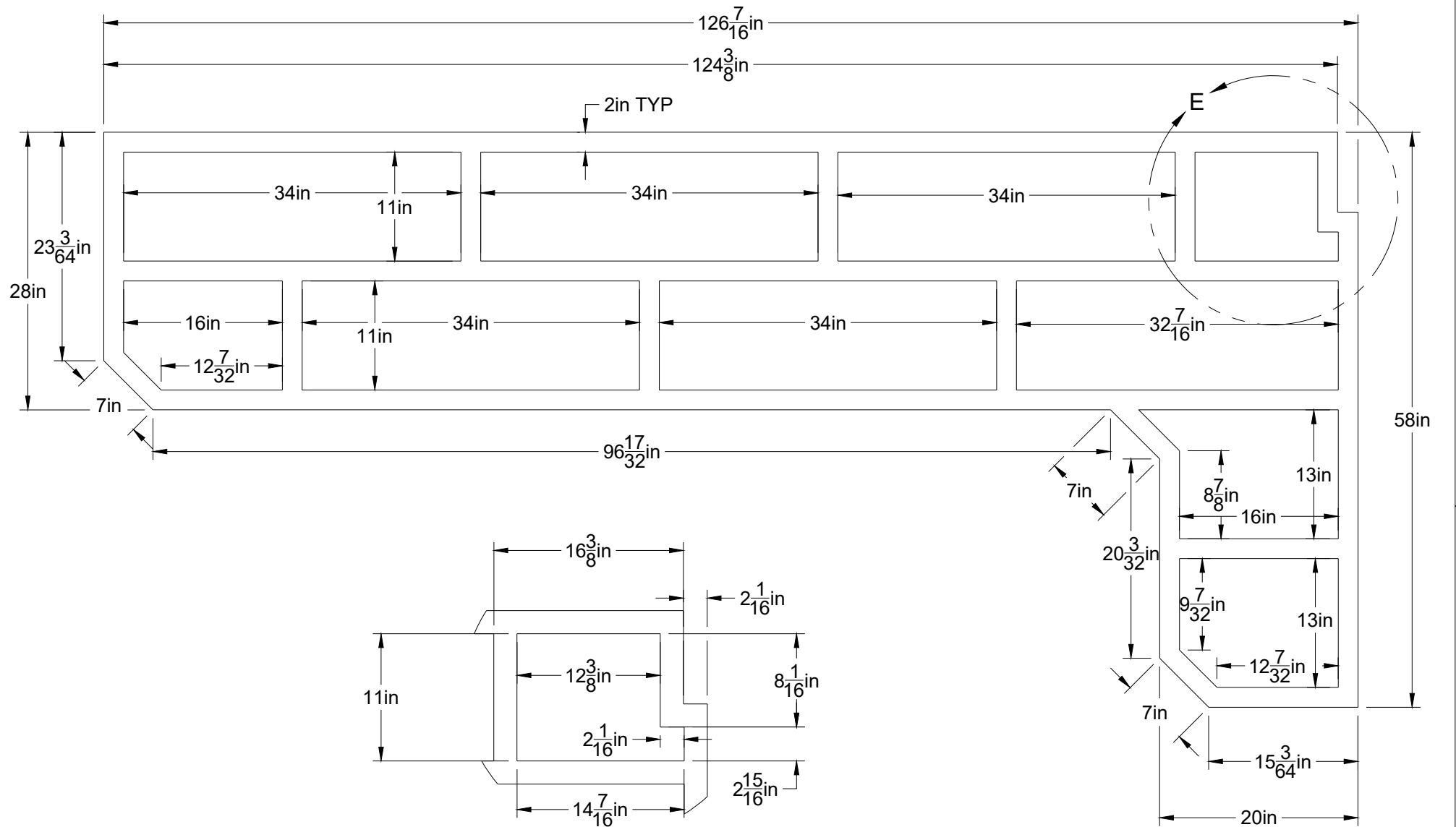
Angle welded inline with frame
Holes at back to attach to planter



Custom Foot Plate TYP
DETAIL D
SCALE 1:2


Bench Base

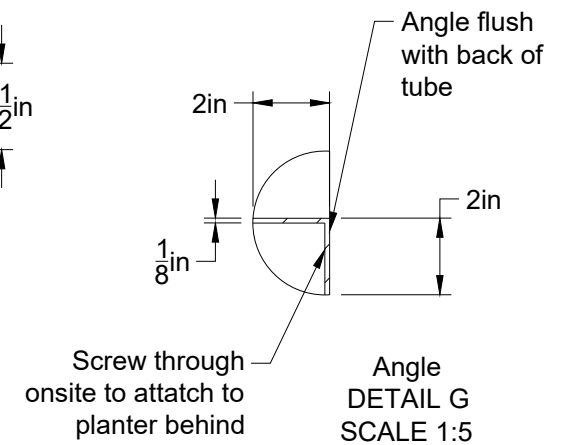
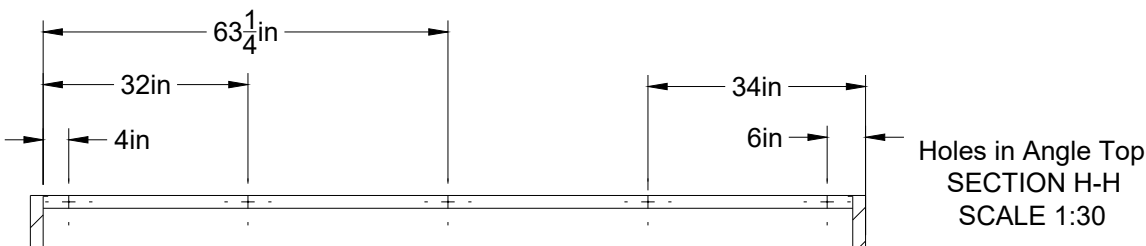
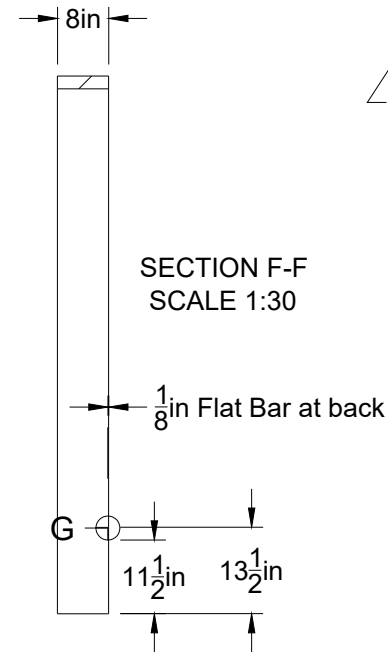
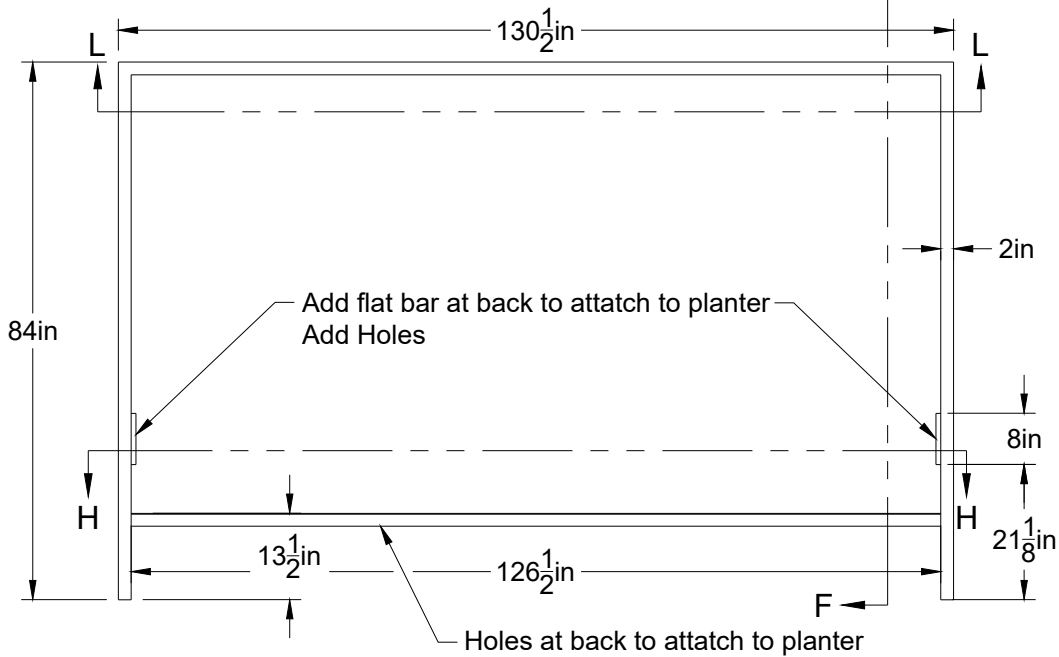
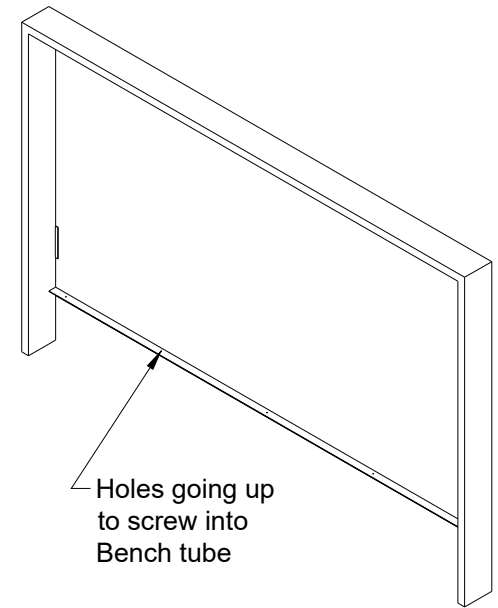
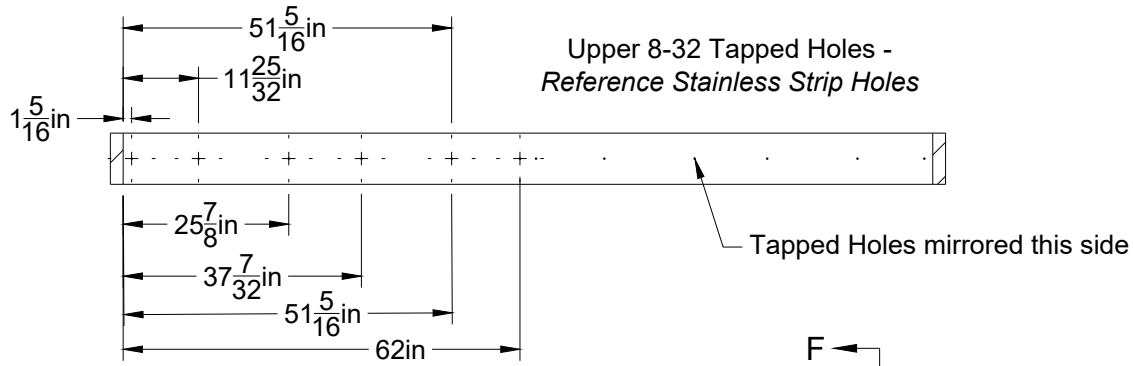
Hardware/Appliances	Materials & Finish Aluminum Tube Aluminum Angle	Date 6/13/2023	Client Reisner-Forgan	
		Drawn MH		Approved ZR
		Page/of 6/10		Scale 1:25
			Project Penthouse Bench and Screen	
			<p>zakrose</p> <p>2100 N Major Ave, Chicago, IL, 60639 zakrose.com zak@zakrose.com</p>	



Rear Corner Details
SCALE 1" = 1'-0"

Bench Base Detailed

Hardware/Appliances	Materials & Finish Aluminum Tube Aluminum Angle	Date 6/13/2023		Client Reisner-Forgan Project Penthouse Bench and Screen
		Drawn MH	Approved ZR	
		Page/of 7/10	Scale 1:14	
				 2100 N Major Ave, Chicago, IL, 60639 zakrose.com zak@zakrose.com



Aluminum Frame

Hardware/Appliances

Materials & Finish
Aluminum Tube
Aluminum Angle

Date
6/13/2023

Drawn
MH

Approved
ZR

Page/of
8/10

Scale
1:30

Client
Reisner-Forgan

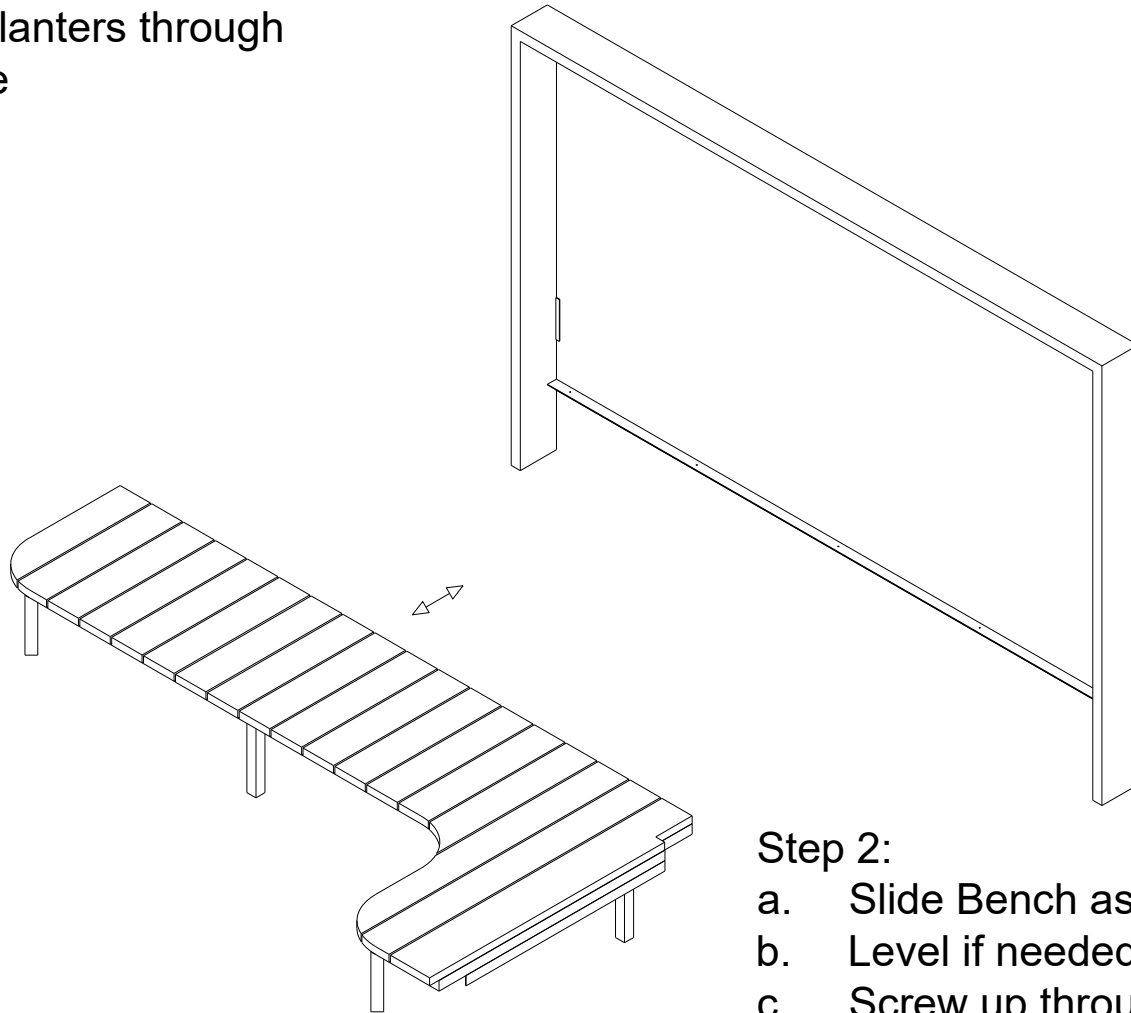
Project
Penthouse Bench and Screen

zakrose

2100 N Major Ave, Chicago, IL, 60639
zakrose.com | zak@zakrose.com

Step 1:

- a. Place Aluminum Frame
- b. Level if needed
- c. Screw into planters through flange, angle



Step 2:

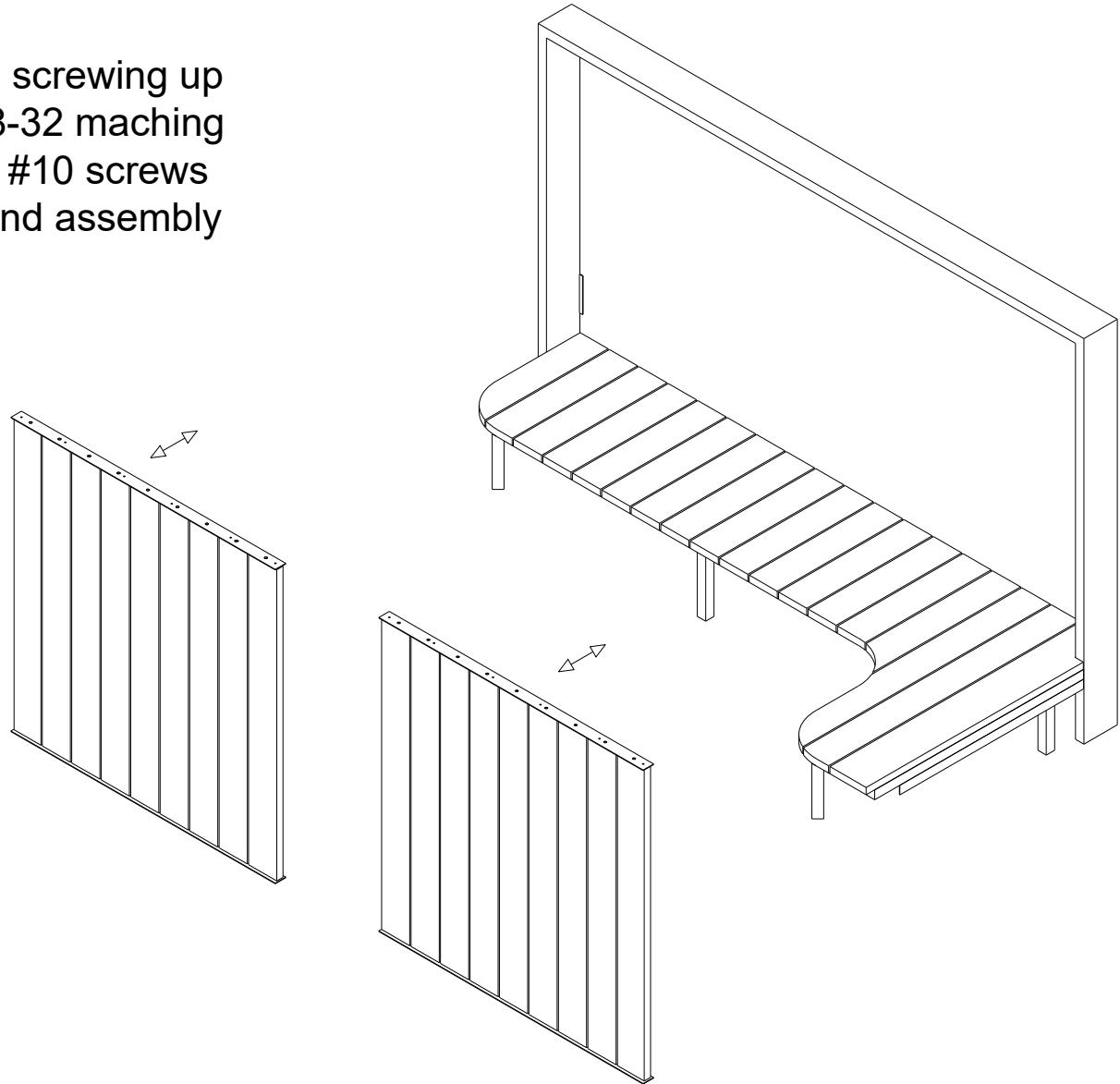
- a. Slide Bench assembly into place
- b. Level if needed
- c. Screw up through frame angle into bench frame frame to secure
- d. Screw throug bench angle into planter

Assembly

Hardware/Appliances	Materials & Finish	Date 6/13/2023		Client Reisner-Forgan	
		Drawn MH	Approved ZR		Project Penthouse Bench and Screen
		Page/of 9/10	Scale 1:30		
				zakrose 2100 N Major Ave, Chicago, IL, 60639 zakrose.com zak@zakrose.com	

Step 3:

- a. In 2 assemblies, insert each slat & Stainless Assembly
- b. Secure by rotating slats and screwing up into aluminum frame using 8-32 matching screws, down into lpe using #10 screws
- c. Follow and repeat with second assembly



Assembly

Hardware/Appliances	Materials & Finish	Date 6/13/2023		Client Reisner-Forgan Project Penthouse Bench and Screen	zakrose 2100 N Major Ave, Chicago, IL, 60639 zakrose.com zak@zakrose.com
		Drawn MH	Approved ZR		
		Page/of 10/10	Scale 1:30		